

Colouring a DWG or DXF-model imported in a Revit Family-file

This tutorial builds upon the tutorial of MaxLloyd called:
How to grow your family: Making use of models created in 3D studio or AutoCAD

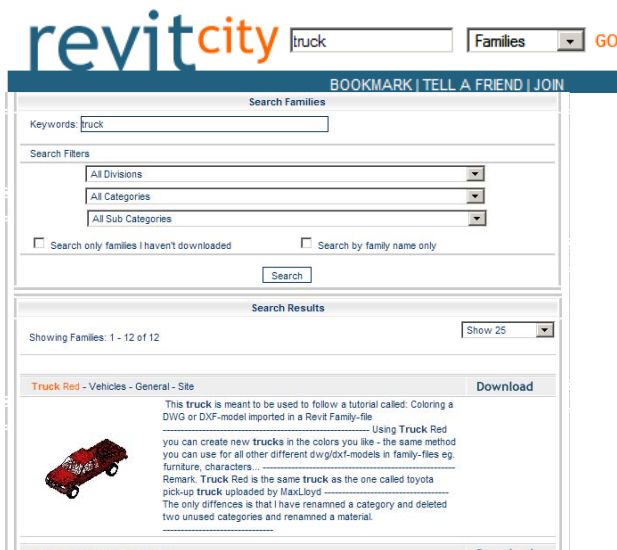
You will learn how to colour parts of a .dwg- or .dxf-file you have imported into a Revit Family-file(.rfa).

The result can look something like this – a car coloured in red, blue or yellow.

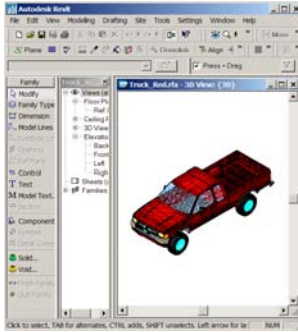
This method you can use for all other families-files with imported dwg or dxf content eg. furnitures, characters...



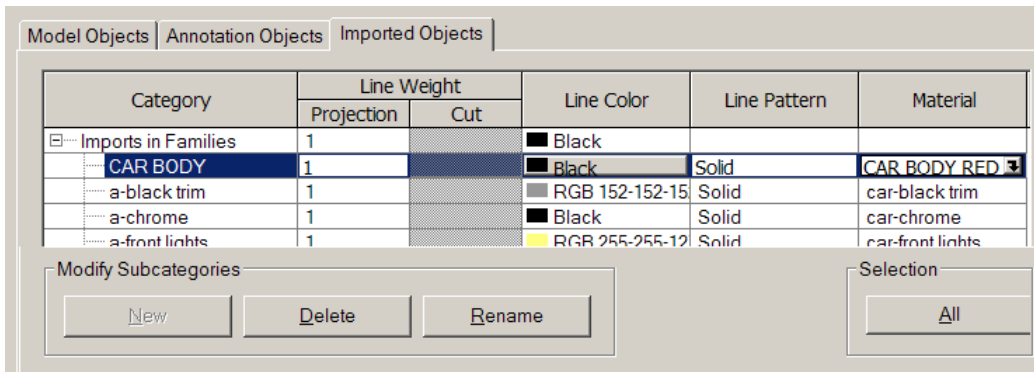
Begin with downloading the file Truck Red.rfa from Revitcity.com.



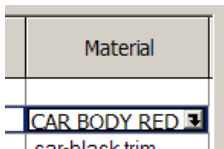
It is the same truck as the one used in the tutorial of MaxLloyd. The only differences is that I have renamed a category to CAR BODY and renamed a material to CAR BODY RED to make it a little easier to follow this tutorial. I have also deleted two unused categories: 0 and ASHADE.



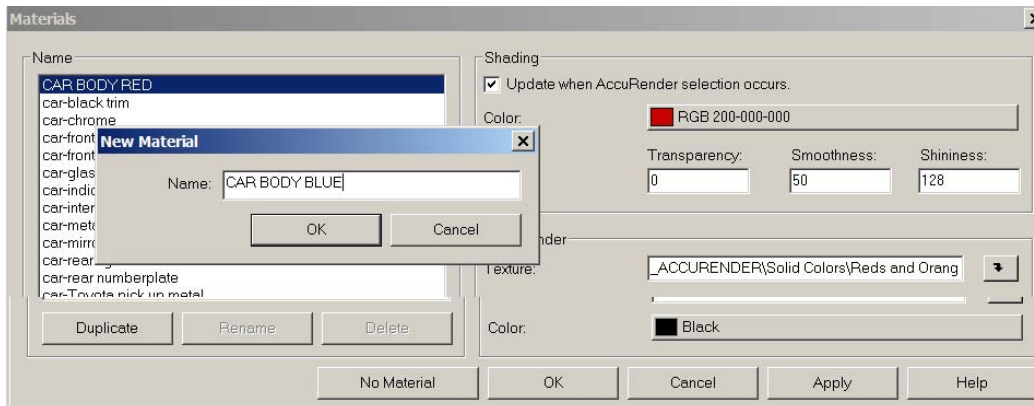
After downloading Truck Red.rfa open it in Revit.
 And go to File > Save As... And save the file as .eg: Truck Blue.rfa



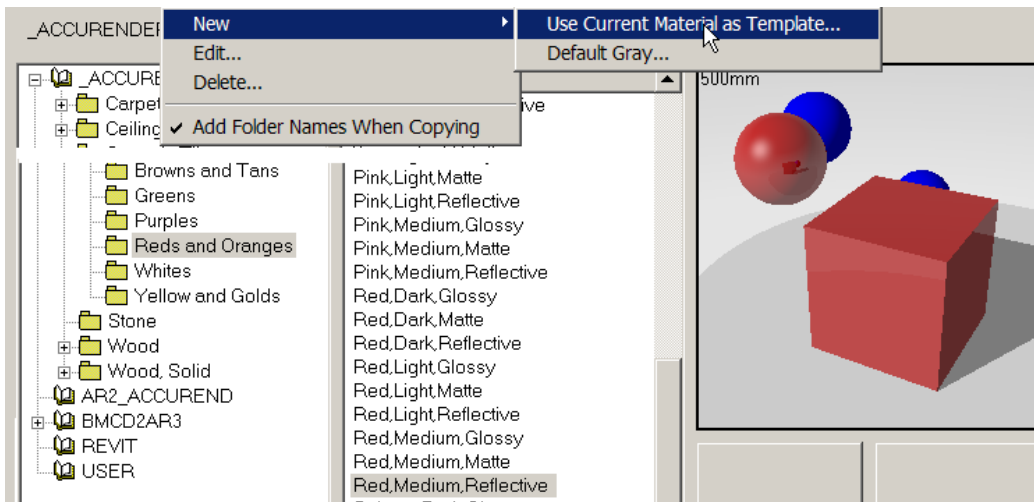
Go to Settings > Object Styles > Imported Objects
 Select Category CAR BODY and click the button Rename
to rename the category to something else eg. BLUE CAR BODY
 (If you do not rename the category to something else it will not work then you inserts cars of different colours as Components in a Project file)



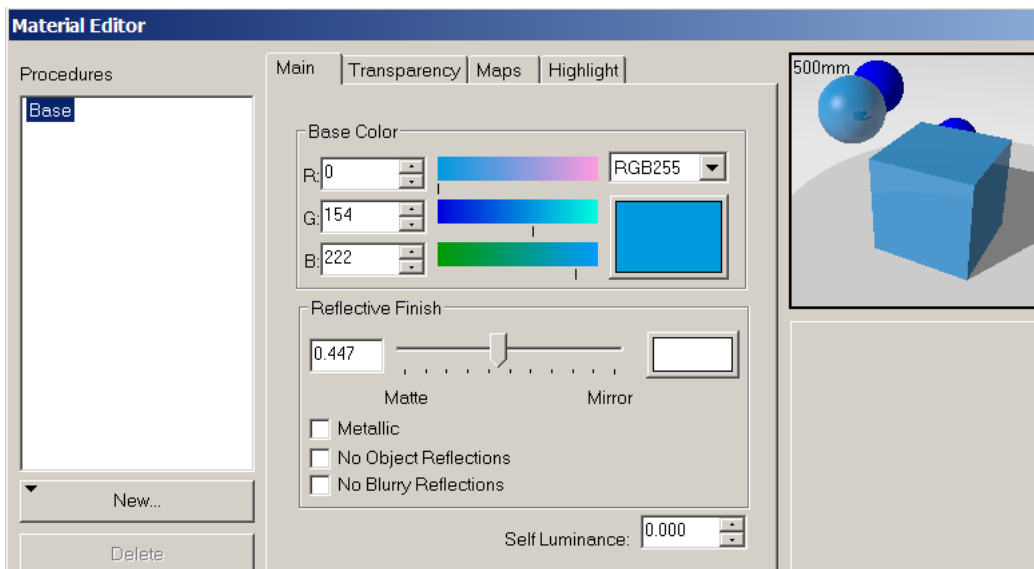
Then click the little arrow on the right to the Material CAR BODY RED.



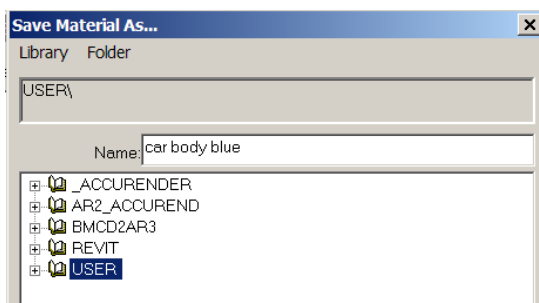
That will bring up the Material window. Select CAR BODY RED and click the button Duplicate. Rename the material to something else eg.: CAR BODY BLUE
 Then click the arrow button to the right of the Accurender Texture.



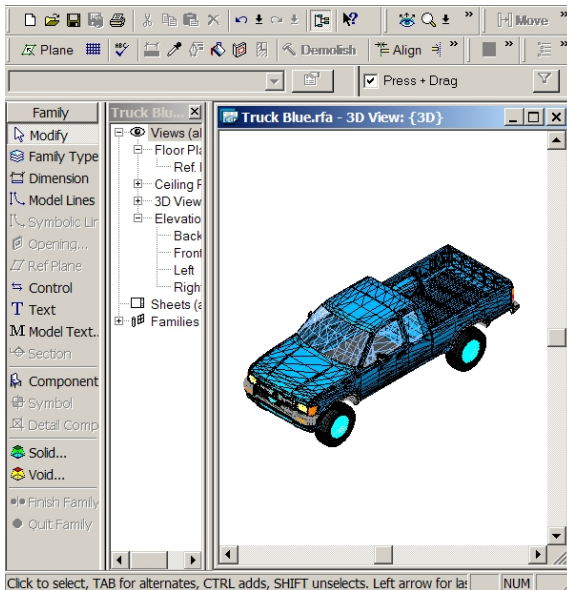
Go to New > Use Current Material as Template



And you can change the colour with the sliders or by entering new values for colours Red, Green and Blue. A tips! If you want to get yellow enter the number 0 for Blue and not 0 for Red and Green.

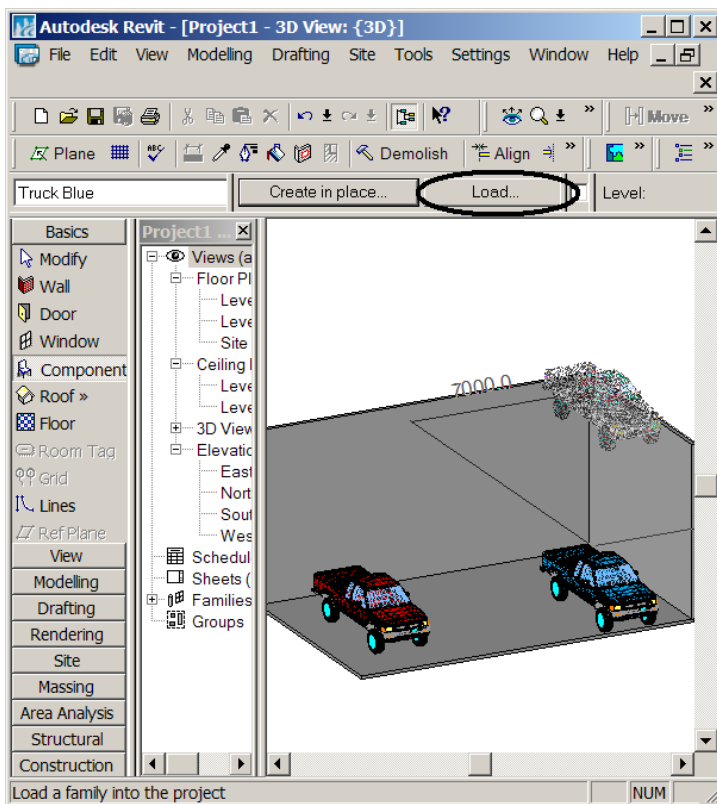


After changing the colour save it with some descriptive name eg.: car body blue



Click to select, TAB for alternates, CTRL adds, SHIFT unselects. Left arrow for la; NUM

And then a lot of OK:s! And you can see the result. File > Save.



Now you can create a new Revit Project(.rvt-file) by going to File > New > Project...

Perhaps creating some walls and a floor. And then on the Design Bar choose Basic > Component and click the Load-button to choose a coloured truck-family-file and insert it. And then the same procedure to Load a truck-family-file with a different colour.