

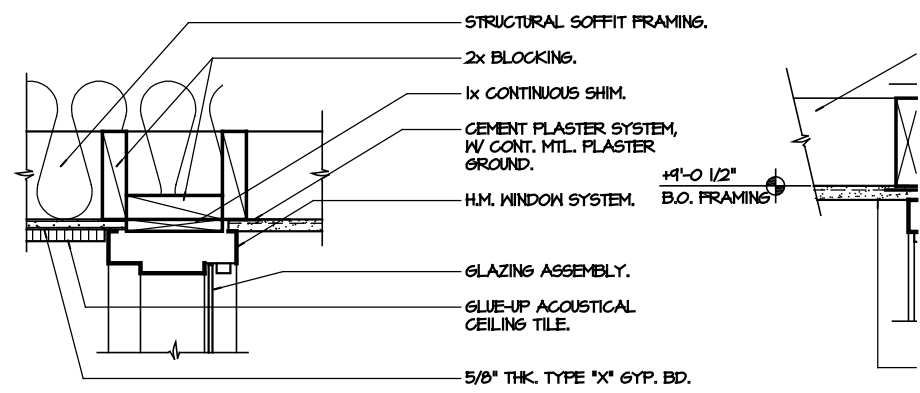
15
H.M. FRAME @ 6" CONC. CURB

10
HEAD

1 1/2" = 1'-0"

1 1/2" = 1'-0"

GYP. BD.
 OCCURS
 SEE
 ME



14
HEAD AT EAVE

9
HEAD

1 1/2" = 1'-0"

1 1/2" = 1'-0"

TIMBER

