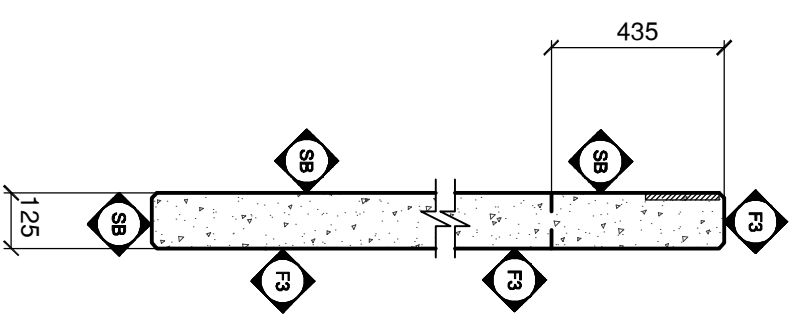
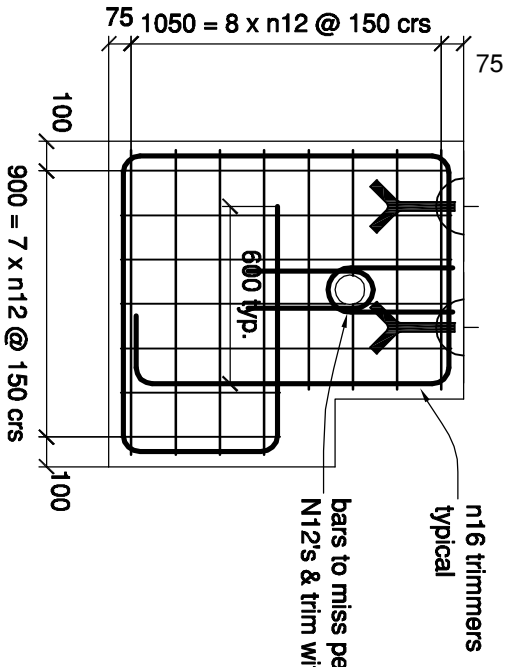
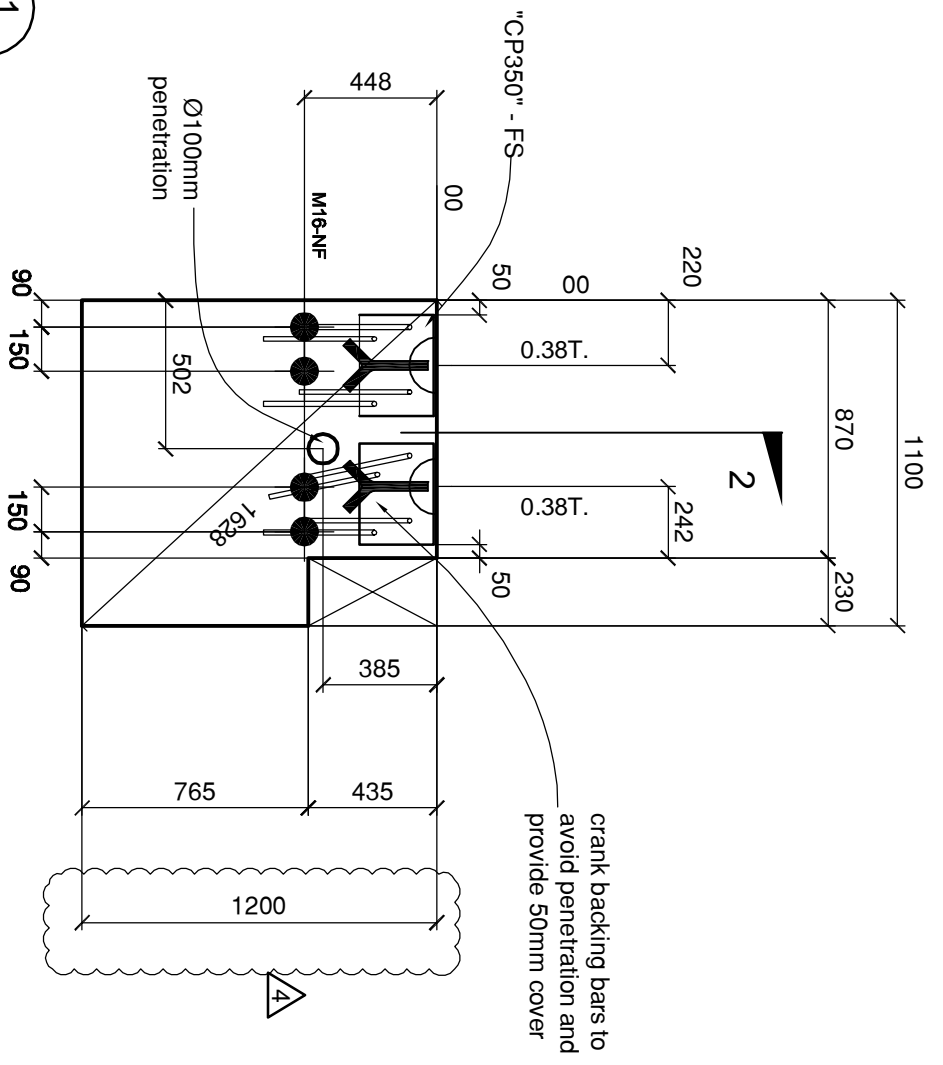


plan view 1



section 2

note: panel out of balance

SB = SANDBLASTED F3 = FLOAT FINISH/UNSEEN

12 x12 CHAMFER TO ALL EDGES
ALL FERRULES TO BE REID ELEPHANTS FOOT

ALL LIFTING INSERTS TO BE REID PRODUCTS
MIN 35mm COVER THROUGHOUT

CONCRETE MIX 902

FINISH FF FINISH NF
SB F3

SA PRECAST
 Precast Sub Contractor
 ABN 92 054 041 726
 72 Dops Road, CAROON PARK, SA, 5008
 Tel (08) 8346 1771 For (08) 8340 1645
 email: odeloid@saprecast.com.au
 15 Nicole Ave., DANBENONG NORTH, VIC 3175
 Tel (03) 9708 5604 For (03) 9708 5605
 email: melbourne@saprecast.com.au

4	03.03.10	Panel Height Reduced
3	09.02.10	Panel Height/Clp/Penetration
2	17.12.09	Panel Split
1	11.12.09	Issued For Approval

MAXA DESIGN
 Level 1, 75 Railway Rd, Blackburn VIC 3130
 T. 03 9013 0449 info@maxadesign.com.au
 F. 03 9894 3187 www.maxadesign.com.au

PROJECT
South Australian Cricket Association
Adelaide Oval
Western Grandstand Redevelopment

SCALE	NTS	U.N.O
JOB #	374A-PK22C	
DATE	02.03.2010	
PANEL MARK	P15	REV. 4

PANEL THICKNESS (mm)	125
PANEL VOLUME (m ³)	0.15
PANEL WEIGHT (T)	0.38
PANEL AREA (m ²)	1.18
28 DAY F _c (MPa)	4.0
LIFT F _c (MPa)	15
MESH	N12 CENT
LIFT POINTS	2 2.5T.EDGE 9T. EDGE FACE (NF) FACE (FF)
PROP POINTS	RECESSED 30mm
FERRULES	• NF ⊕ FF
M12	
M16	4
M20	
M24	
CAST IN PLATES	■ NF □ FF
CP1	
CP2	
CP3	
CP4	
CP5	
CP6	
CP7	
CP8	
CP9	
CP10	
CP11	
CP12	
CP13	
CP14	
CP15	
GROUT TUBE	