

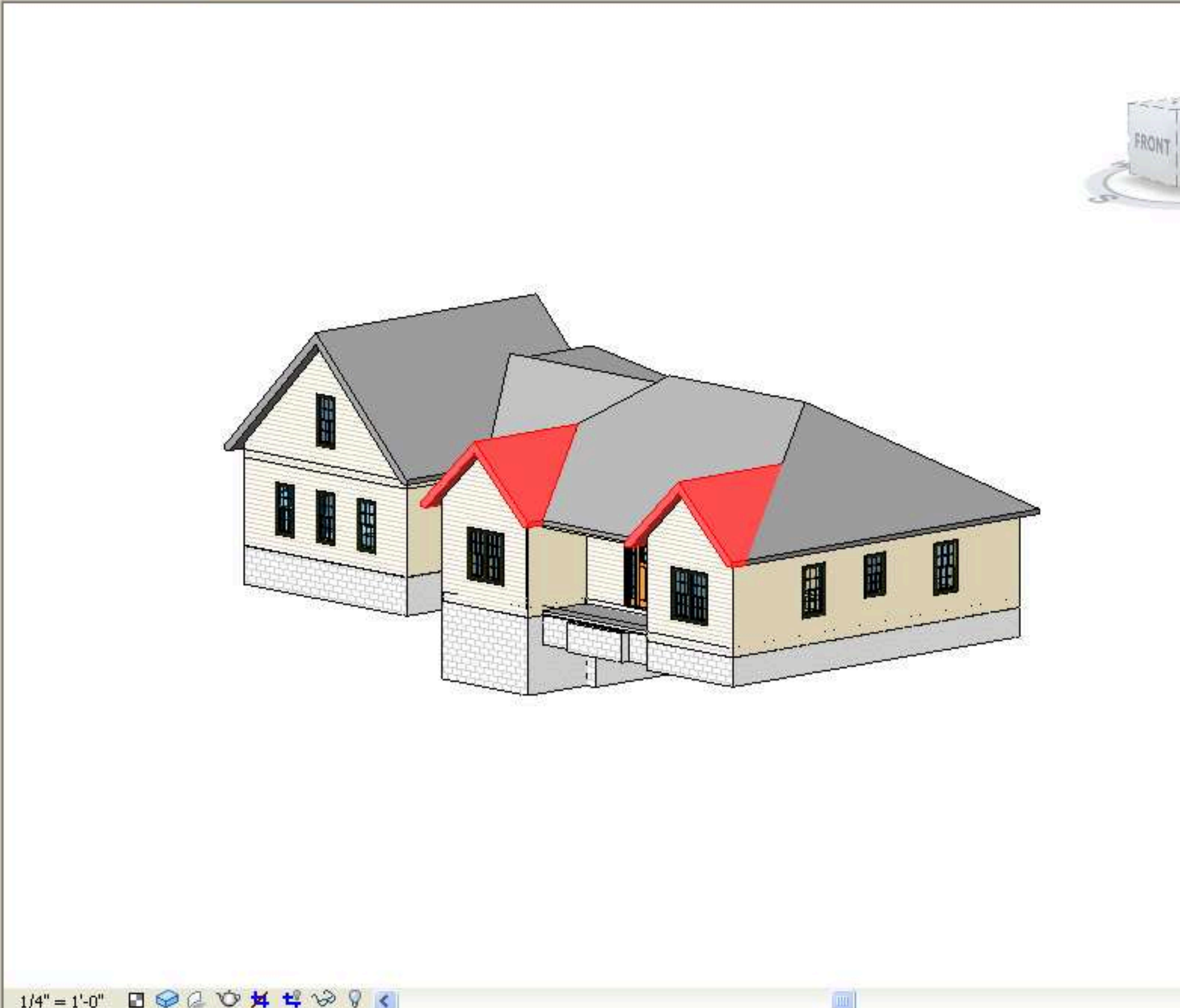
Revit Architecture 2009 - [nardo 3-13.rvt - 3D View: {3D}]

Modelling Drafting Site Tools Settings Window Help

Revit Architecture 2009 ribbon menu showing various tool groups: Copy, Paste, Move, Copy, Rotate, Array, Mirror, Content Search, Demolish, Align, Split, Trim, Offset, Edit Option, and a 'Press + Drag' button with an 'Activate Dimensions' button.

Project Browser for 'nardo 3-13.rvt - Proj...' showing a tree view of project elements:

- Views (all)
  - Floor Plans
    - Basement
    - Basement E
    - Bonus Floor
    - First Floor - r
    - First Floor - r
    - First Floor El
    - First Floor Fr
    - Roof Framin
    - Roof Plan
    - Second Floo
    - Second Floo
    - Site Plan
    - TO CMU
    - TO Plate
  - Ceiling Plans
    - Bonus Floor
    - First Floor - r
    - First Floor - r
    - TO Plate
  - 3D Views
    - {3D}
  - Elevations (Build)
    - East
    - North
    - South
    - West
  - Legends
  - Schedules/Quan
    - Area Schedule (I
    - Door Schedule
    - Lighting Fixture S
    - Room Finish Sch
    - Window Schedu
  - Sheets (all)
    - A0 - Basement F
    - A1 - First Floor P
    - A2 - Second Floo
    - A3 - East Floor P



alternates, CTRL adds, SHIFT unselects.

CAP NUM

Windows taskbar showing: Inbox - Microsoft Out..., Revit Architecture 20..., AutoCAD LT - [G:\RE..., Yahoo! - Microsoft In...