

BLOCK-OUT ALL
FIRST FLOOR SWITCHES
FOR 1x6 TRIM

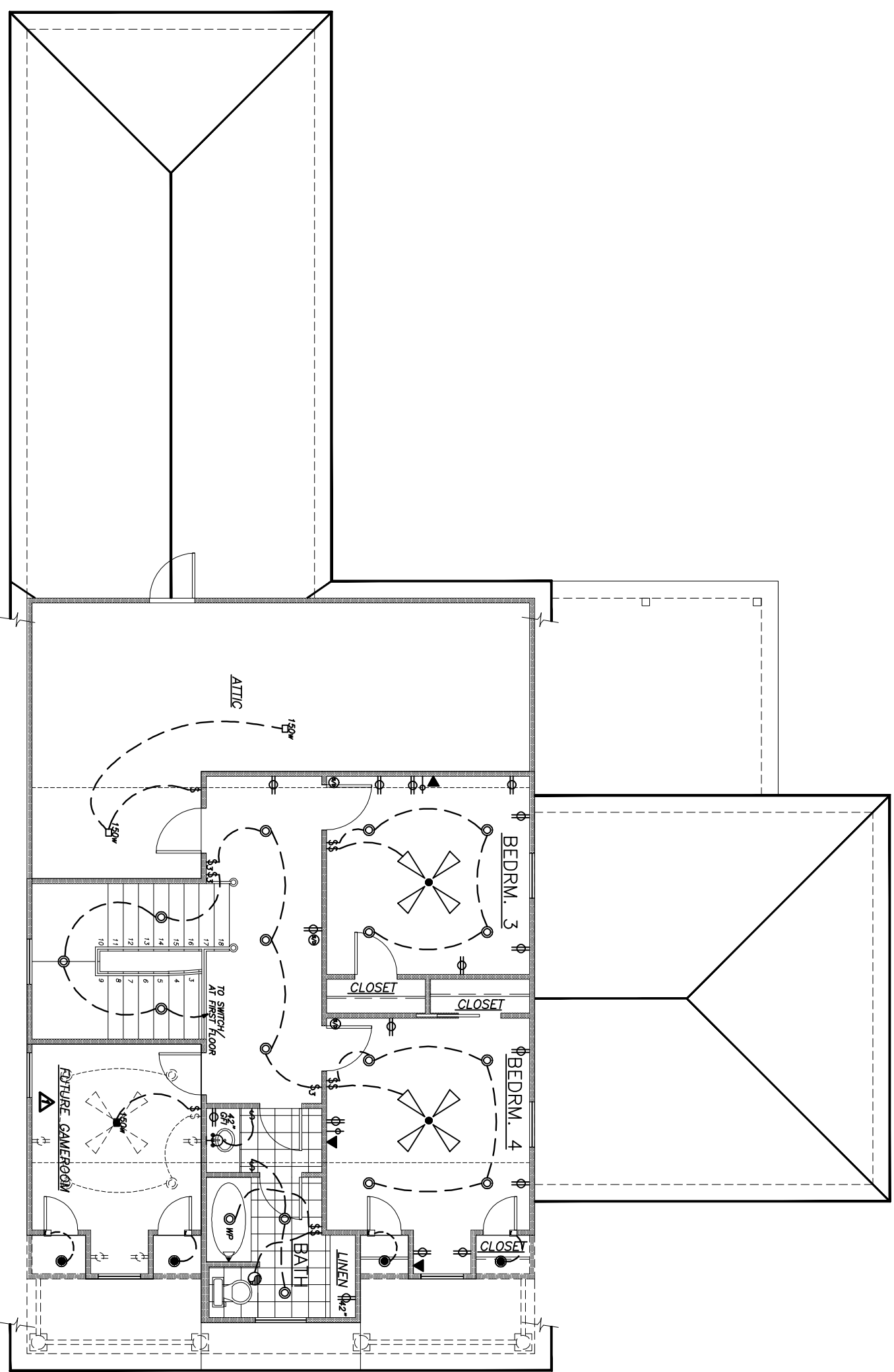
BLOCK-OUT ALL
SECOND FLOOR SWITCHES
FOR 1x4 TRIM

ELECTRICAL LEGEND

○	110 VOLT RECEPTACLE
○ WP	WATERPROOF RECEPTACLE
○ FLR	IN FLOOR
○ GFI	110 VOLT W/ GROUND FAULT INTERRUPTER
○ 220V	220 VOLT RECEPTACLE
—	CABLE
⊙	GAS OUTLET
⊙	TELEPHONE OUTLET
⊙	JAMB SWITCH
⊙	FLOODS ON PHOTO CELL
⊙	UNDER CAB. STRIP LIGHT
⊙	SINGLE POLE SWITCH
⊙	THREE WAY SWITCH
⊙	FOUR WAY SWITCH
⊙	DIMMER SWITCH
⊙	PENDANT LIGHT
⊙	HANGING LIGHT
⊙	RECESSED CAN LIGHT
⊙ WP	WATERPROOF RECESSED CAN LIGHT
⊙	SMOKE DETECTOR
⊙	DIRECTIONAL RECESSED CAN LIGHT
⊙	CEILING MOUNT FIXTURE
⊙	EXHAUST FAN
⊙	EXHAUST FAN W/ LIGHT KIT
⊙	WALL MOUNTED LIGHT
⊙	WALL MOUNTED PHOTO CELL LIGHT
⊙	HOSE BIB
⊙	FLUORESCENT FIXTURE
⊙	2x2 FLUORESCENT FIXTURE
⊙	150W HALOGEN
⊙	CENSOR
⊙	FAN
⊙	42" OUTSIDE FAN

ELECTRICAL NOTES

- 1) GAS WATER HEATER
- 2) HARD WIRE HOUSE FOR SECURITY SYSTEM. SECURITY SYSTEM TO BE SELECTED BY OWNER
- 3) SECURITY SYSTEM WILL BE INSTALLED PRIOR TO APPLICATION OF DRY WALL AND ACCORDING TO MANUFACTURERS SPECS. AS NEGOTIATED BY OWNER UNDER SEPARATE CONTRACT.
- 4) SMOKE DETECTORS TO BE HARDWIRED INTERCONNECTED WITH BATTERY BACK-UP AS REQUIRED BY THE IRC R317.1.
- 5) MIN. 2 LIGHTS IN EACH ATTIC AREA.



SECOND FLOOR ELECTRICAL
Scale: 1/4" = 1'-0"