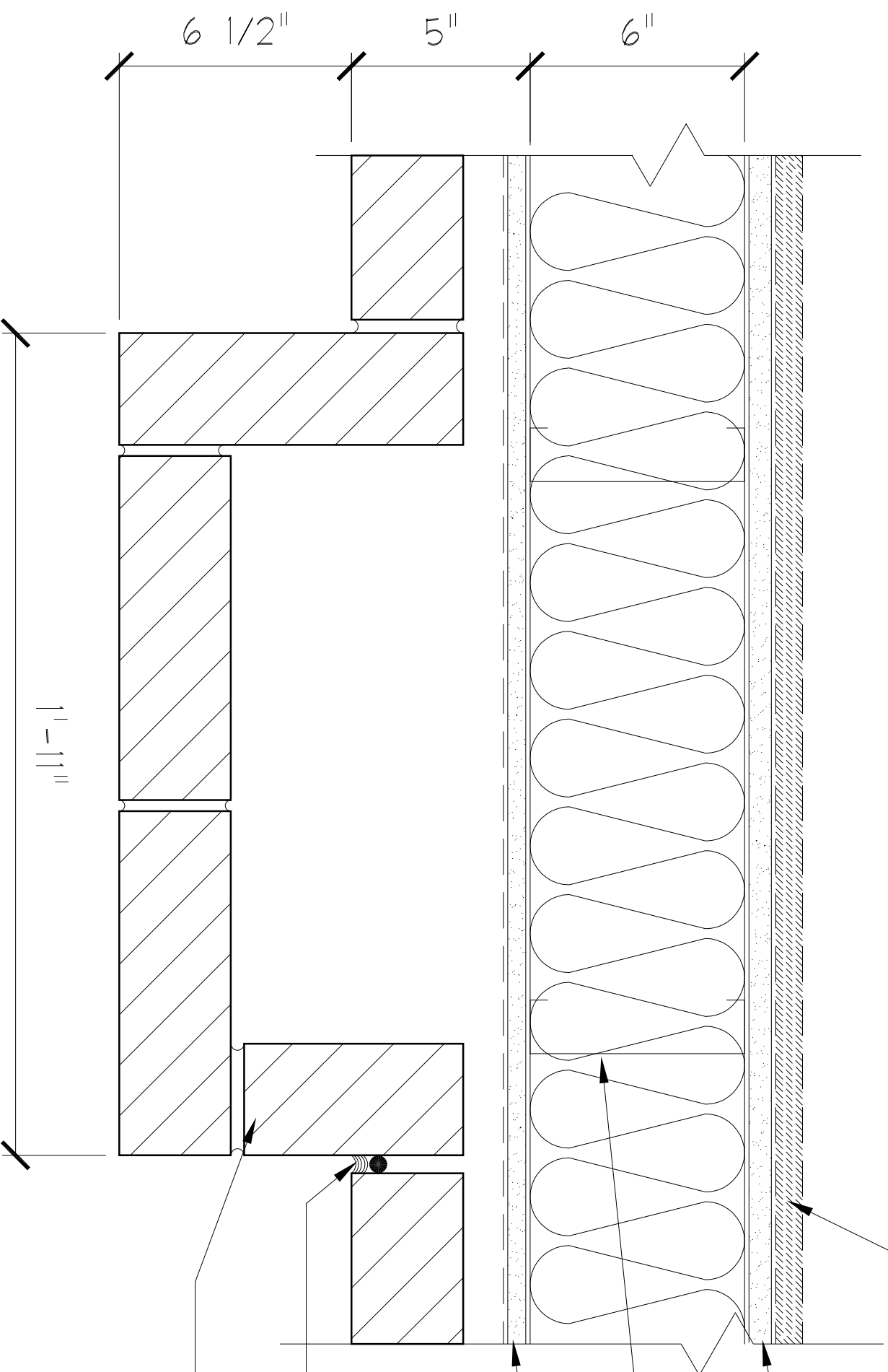


20L JOINT
:ALANT



INTERIOR WALL FINISH BOARD (EITHER 1/2" PLYWOOD OR 3/4" PARTICLE BOARD w/ LAMINATE FINISH) - REFER TO INT. ELEV. FOR LOCATION IN SALES - SUPPLIED BY OWNER

5/8" GYPSUM DRYWALL w/ VAPOR BARRIER

6" MTL. STUDS @ 16" O.C.

1/2" EXTERIOR SHEATHING w/ INFILTRATION BARRIER

CONTROL JOINT w/ SEALANT

QUEEN BRICK VENEER 'RUBIGO RED' BY BELDEN BRICK - PROVIDE EXTENDED BRICK TIES @ PLASTERS TO CONNECT TO WALL