

Architecture Structure Systems Insert Annotate Analyze Massing & Site Collaborate View Manage Add-Ins **Modify | Viewports**

Modify | Viewports Rotation on Sheet: 90° Clockwise

**Properties**

Viewport Viewport 1

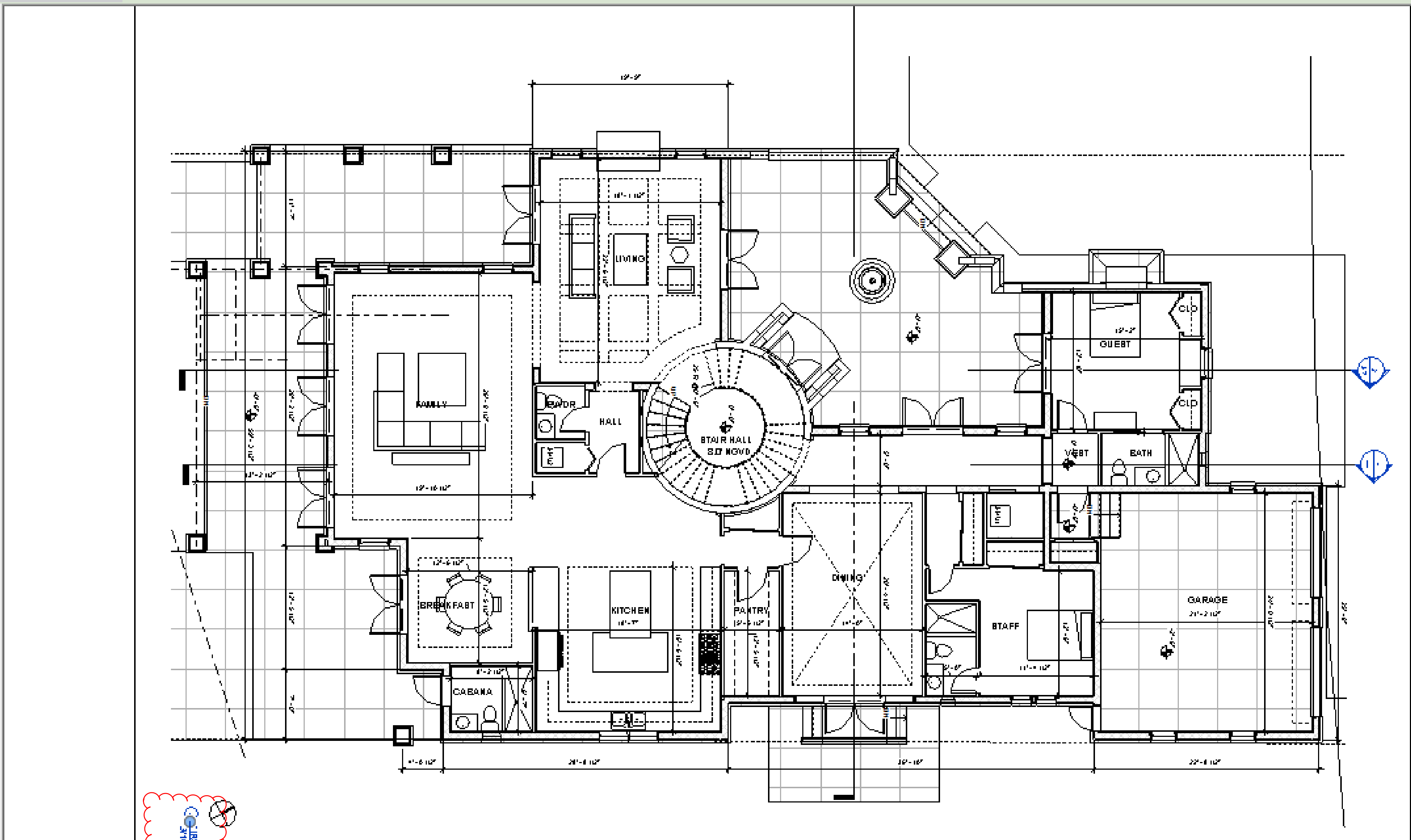
Viewports (1) Edit Type

Graphics

View Scale	3/16" = 1'-0"
Scale Value 1:	64
Display Model	Normal
Detail Level	Fine
Parts Visibility	Show Original
Detail Number	
Rotation on Sheet	90° Clockwise
Visibility/Graphics Overrides	Edit...
Graphic Display Options	Edit...
Underlay	None
Underlay Orientation	Plan
Orientation	Project North
Wall Join Display	Clean all wall joins
Discipline	Architectural
Show Hidden Lines	By Discipline

Project Browser - Buechele2

- Section 2 - Callout 1
- Section 3
- Section 5
- Section 6
- Section 9
- Area Plans (Gross Building)
  - FIRST FLOOR A/C AREA
  - SECOND FLOOR A/C AREA
- Legends
- Schedules/Quantities
- Sheets (all)
  - A0 - COVER
  - A1 - SITE PLAN
  - A2 - FIRST FLOOR PLAN**
  - A3 - SECOND FLOOR PLAN
  - A4 - ELEVATIONS N W
  - A5 - ELEVATIONS E S
  - A7 - SECTIONS
  - A101 - Unnamed
- Families
- Groups



KEYPLAN N.T.S.

REVISIONS		
NO.	DESCRIPTION	DATE

**ARCHITECTURE SCHEMATIC REVIEW**

**BALLI - TRAUTMAN**  
ARCHITECTURE INTERIORS LANDSCAPE ARCHITECTURE

JOB NUMBER: \_\_\_\_\_  
 CHECKED BY: \_\_\_\_\_  
 ISSUE DATE: 11/15/14  
 SCALE: AS NOTED

SHEET TITLE

NOTES

SHEET NUMBER

**A2**

COPYRIGHT BALLI-TRAUTMAN ARCHITECTS, LLC  
1511 SW 10TH AVENUE SUITE 100 CORAL GABLES, FLORIDA 33134