

GATE TYPES 16

EXISTING (E) U.O.N.	GATE NUMBER	GATE			FRAME				HARDWARE					SIGNAGE		COMMENTS
		LOCATION	DOOR TYPE	WIDTH	HEIGHT (6'-0" U.O.N.)	FINISH (PAINT, U.O.N.)	HINGES (X=NEEDED)	LOCKING HASP (X=NEEDED)	CAIN BOLT (X=NEEDED)	STOP (X=NEEDED)	KICK PLATE (PUSH) (X=NEEDED)	ACCESSIBLE ENTRANCE, SEE DETAIL 14/A9.01	MAINTENANCE USE ONLY	SIGNAGE, SEE 15/A9.01		
(N)	G1	KINDERGARTEN PLAY YARD GATE	A	3'-6"	7'-0"		X		X	X	X					PANIC BAR & CLOSER
(N)	G2	GATE AT STAIR	AA	7'-5"												
(N)	G3	MAINTENANCE GATE	AA	7'-5"												
(N)	G4	MAINTENANCE GATE	AA	7'-0"												
(N)	G5	ELEC. EOPM YARD GATE	AA	6'-10"												
(N)	G6	MAINTENANCE GATE	AA	7'-6"												
(N)	G7	LEARNING GARDEN GATE	AA	8'-0"			X	X	X	X	X					PANIC BAR & CLOSER
(N)	G8	EXIT BALCONY GATE	B	3'-0"	7'-0"		X		X	X	X					PANIC BAR & CLOSER

GATE SCHEDULE 12

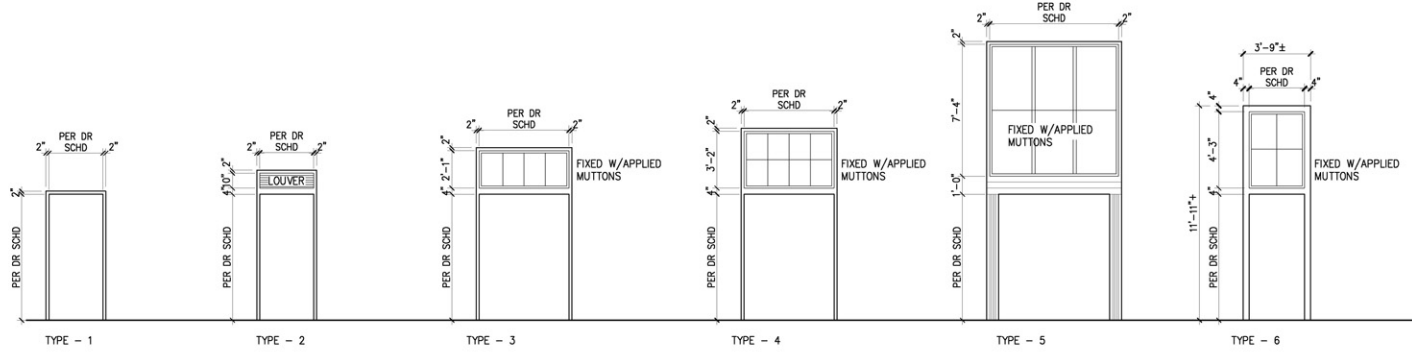
SCHEDULE LEGEND

- (N) NEW
 (E) EXISTING
 C COPPER
 HM HOLLOW METAL
 WD WOOD, VENEER, BIRCH, W1 GRADE PREMIUM
 CLR TRANSPARENT FINISH
 SP SPECIAL BY MANUFACTURER
 L 1/4" THICK LAMINATED/TEMPERED GLAZING
 CLF CHAIN LINK FENCE
 TS TUBE STEEL
 S SMOOTH FINISH

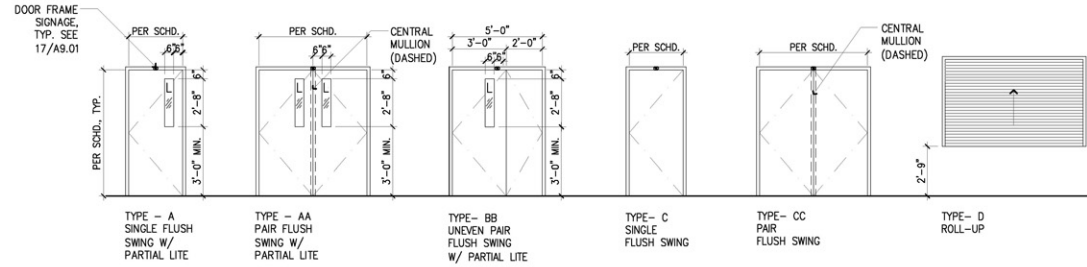
DOOR SCHEDULE NOTES

- ① ALTERNATE #6 REPLACE (E) DOOR WITH (N) 20 MIN. RATED DOOR
 ② ELECTROMAGNETIC HOLD OPEN

DOOR NOTES 11



FRAME TYPES 10



NOTE: 1. DIMENSIONS FOR EXISTING DOORS ARE APPROXIMATE, V.F.

DOOR TYPES 9

EXISTING (E) U.O.N.	DOOR NUMBER	ROOM NAME	DOOR TYPE	FIRE RATING/ULC	WIDTH	HEIGHT (6'-0" U.O.N.)	THICKNESS (1-3/4" U.O.N.)	MATERIAL (E) (MD, U.O.N.)	FINISH (E) (CLF, FINISH, U.O.N.)	TYPE (1 U.O.N.)	MATERIAL (E) (MD, U.O.N.)	FINISH (PAINT, U.O.N.)	FRAME DETAIL	THRESHOLD DETAIL	HARDWARE SET (EXISTING U.O.N.)	ROOM IDENTIFICATION, SEE DETAIL 5/A9.01	DOOR FRAME ROOM IDENTIFICATION, SEE DETAIL 17/A9.01	SIGNAGE			TACTILE EXPRESS		
																		ROOM IDENTIFICATION SIGNAGE TEXT	RESTROOM DOOR SIGN, SEE DETAIL 7/A9.01	RESTROOM WALL SIGN, SEE DETAIL 8/A9.01		ACCESSIBLE ENTRANCE, SEE DETAIL 14/A9.01	
LEVEL 0	01	EXTERIOR LUNCH ROOM	AA	6'-0"	7'-6.75"			FRP	SP		AL	SP			9/A1.21	06	B	X	CAFETERIA 21		X	11B/A9.01	
(N)	21.1	LUNCH ROOM	BB	6'-0"	5'-0"			VD	CLR						10A/A9.02	03	B	X	CAFETERIA 21				
(N)	21.2	LUNCH ROOM	BB	6'-0"	5'-0"			VD	CLR						10A/A9.02	04	B	X	CAFETERIA 21				
(N)	22	EXTERIOR KITCHEN	A	3'-0"	7'-5.25"			FRP	SP		AL	SP			9/A1.21	03	B	X	KITCHEN 22	X		11B/A9.01	
(N)	100	KITCHEN	A	3'-0"	7'-5.25"			VD	CLR						10A/A9.02	11	B	X	KITCHEN 22				
(N)	100	ENTRANCE	BB	5'-0"	7'-6.5"			FRP	SP		AL	SP			9/A1.21	03						11B/A9.01	
(N)	100A	VESEMBLE	A	2'-0"	3'-0"			VD	CLR		HM	P			10A/A9.02	10			X				
(N)	100B	ENTRANCE	BB	5'-0"	7'-0.5"	2"		FRP	SP		AL	SP			9/A1.21	03							11B/A9.01
(N)	100C	CLOSET	C	2'-0"	2'-10"			VD	CLR		HM	P			9/A1.21	10	B	X	STORAGE 100C				
(N)	T1	BOYS TOILET	C	3'-0"				FRP	SP	2	AL	SP			9/A1.21	07			B	B	X		
(N)	T2	GIRLS TOILET	C	3'-0"				FRP	SP	2	AL	SP			9/A1.21	07			A	A	X		
(N)	S1	STORAGE	A	4'-5"	3'-0"										10C/A9.02	11	B	X	STORAGE S1				
(N)	S2	STORAGE	A	3'-0"				VD	CLR		HM	P			(E)	11	B						X
(N)	S5	STORAGE	C	3'-0"	7'-5.25"			FRP	SP		AL	NONE			9/A1.21	05	B	X	STORAGE S5				
(N)	J1	JANITORS ROOM	C	3'-0"	7'-5.25"			(E) HM	FS		(E) HM				(E)	10	B	X	CUSTODIAL J1				
(N)	M1	ELEVATOR EQUIP. ROOM	A	4'-5"	3'-0"			(E) HM	P		(E) HM				(E)	10	C	X	ELEVATOR EQUIPMENT M1				
(N)	BR	EXTERIOR BOILER ROOM		2'-10"	7'-0"	2"		(E) C	NONE		(E) C	NONE			(E)	05	C	X	BOILER ROOM BR				11B/A9.01
(N)	BR.1	BOILER ROOM		2'-10"				(E) HM	P		(E) HM				(E)	10	C		BOILER ROOM BR				
(N)	BR.2	BOILER ROOM		2'-10"				(E) HM	P		(E) HM				(E)	10	C		BOILER ROOM BR				
(N)	BR-A	ELECTRICAL PANEL ROOM	C	3'-0"	7'-0"			HM	P		HM	P			(E)	12	C	X	ELECTRICAL CLOSET BR-A				
(N)	BR1	STORAGE		2'-6"							(E) HM				(E)	10	B		STORAGE BR1				
(N)	R1	KITCHEN ROLL-UP DOOR		8'-11"											NA								
(N)	R2	KITCHEN ROLL-UP DOOR		8'-2"											NA								
LEVEL 1	A2	PRINCIPAL'S OFFICE		3'-0"											10B/A9.02	16	C	X	PRINCIPAL'S OFFICE A2				
(N)	A2A	STORAGE		3'-0"											10B/A9.02	11	B		STORAGE A2A				
(N)	A3	OFFICE		3'-0"											10B/A9.02	11	C	X	OFFICE A3				
(N)	A3A	UNISEX LAVATORY		2'-6"											10B/A9.02	17							
(N)	A3A.1	UNISEX RESTROOM		2'-6"											10A/A9.02	17							
(N)	K1	KINDERGARTEN RESTROOM	A	3'-0"				VD	CLR		HM	P			10B/A9.02	08	A	X	K1		C	C	11C/A9.01
(N)	K1A	KINDERGARTEN RESTROOM		3'-0"											7/A9.02	14							
(N)	K1C	CLOSET	C	3'-0"				VD	CLR		HM	P			10B/A9.02	18	B		STORAGE K1C				
(N)	K2	KINDERGARTEN RESTROOM	A	3'-0"				VD	CLR		HM	P			10B/A9.02	08	A	X	K2				11C/A9.01
(N)	K2.1	KINDERGARTEN RESTROOM		3'-0"											10B/A9.02	15			X				
(N)	K2A	KINDERGARTEN RESTROOM		3'-0"											7/A9.02	14					C	C	
(N)	L1	CLASSROOM	A	2'-0"	3'-0"			VD	CLR		HM	P			10B/A9.02	09	A	X	L1				
(N)	L1.1	CLASSROOM	A	2'-0"	3'-0"			VD	CLR		HM	P			10B/A9.02	09	A	X	L1				
(N)	L2	CLASSROOM	A	2'-0"	3'-0"			VD	CLR		HM	P			10B/A9.02	09	A	X	L2				
(N)	L2.1	CLASSROOM	A	2'-0"	3'-0"			VD	CLR		HM	P			10B/A9.02	09	A	X	L2				
(N)	L3	LIBRARY	A	2'-0"	3'-0"			VD	CLR		HM	P			10B/A9.02	09	A	X	L3				
(N)	L3.1	LIBRARY	A	2'-0"	3'-0"			VD	CLR		HM	P			10B/A9.02	09	A	X	L3				
(N)	L3.2	MEDIA CENTER	A	2'-0"	3'-0"			VD	CLR		HM	P			10B/A9.02	09	A	X	L3				
(N)	L3.3	MEDIA CENTER	A	2'-0"	3'-0"			VD	CLR		HM	P			10B/A9.02	09	A	X	L3				
(N)	L3A	OFFICE	A	3'-0"				VD	CLR		HM	P			10B/A9.02	13	B		L3A				
(N)	3	CLASSROOM	A	2'-0"	3'-0"			VD	CLR		HM	P			10B/A9.02	09	A	X	3				
(N)	3.1	CLASSROOM	A	2'-0"	3'-0"			VD	CLR		HM	P			10B/A9.02	09	A	X	3				
(N)	4	CLASSROOM	A	2'-0"	3'-0"			VD	CLR		HM	P			10B/A9.02	09	A	X	4				
(N)	4.1	CLASSROOM	A	2'-0"	3'-0"			VD	CLR		HM	P			10B/A9.02	09	A	X	4				
(N)	5	CLASSROOM	A	2'-0"	3'-0"			VD	CLR		HM	P			10B/A9.02	09	A	X	5				
(N)	5.1	CLASSROOM	A	2'-0"	3'-0"			VD	CLR		HM	P			10B/A9.02	09	A	X	5				
(N)	6	CLASSROOM	A	2'-0"	3'-0"			VD	CLR		HM	P			10B/A9.02	09	A	X	6				
(N)	6.1	CLASSROOM	A	2'-0"	3'-0"			VD	CLR		HM	P			10B/A9.02	09	A	X	6				
(N)	18	EXTERIOR CLASSROOM	BB	5'-0"	7'-0.5"			FRP	SP	3	AL	SP			9/A1.21	01	A	X	18		X	11B/A9.01	
(N)	18.1	CLASSROOM	BB	5'-0"				VD	CLR		HM	P			10A/A9.02	03	A	X	18				
(N)	18A	STORAGE		3'-0"											10B/A9.02	10	B		STORAGE 18A				
(N)	18A.1	STORAGE		2'-6"											10A/A9.02	10	B		STORAGE 18A				
(N)	19	AUDITORIUM	A	3'-0"				VD	CLR		HM	P			10B/A9.02	09	B	X	AUDITORIUM 19				11C/A9.01
(N)	19.1	AUDITORIUM	BB	5'-0"	7'-0.5"			VD	CLR		HM	P		</									