

PLAN KEYNOTES

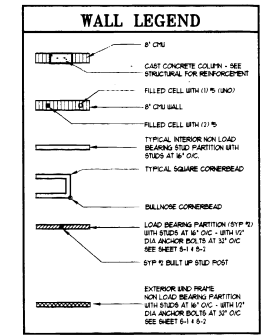
- (A) 1" DIA. (AT BASE) CLASSIC CAST COLUING PIPES TO CAP SECURE PER STRUCTURAL TYPICAL OF 41
- (B) 1" USE BUCKUP AT 4" OFF WITH BUCK, SPLASH AT TRANSITION
- (C) 2x4 FRAME WALL WITH GIBBY IN VENT HIGH - FRAME FOR CABINET DOOR OPENING
- (D) COVER PLATFORM WITH 1/2" SPOKER BOARD - W/ TILE FIN.
- (E) 2x4 STUD FRAME WALL - TURN SIDIWAY WITH 1/2" SPOKER EACH SIDE WITH 1/2" LENDER BOARD ON ALL EXPOSED FACES
- (F) 8" X 24" HIGH X 6" WALL W/ LEDGE
- (G) RIVA 6 - SET IN TUB HELL TOP OF DOOR AT 75" AFF
- (H) 1" BARE DIAL CORN. COLUIN - SET ON 4" HIGH X 8" SQUARE PLINTH PER DETAIL
- (I) 60P NEAR SET SL AT 36" AFF 3.5" DIA. ARCH SPRING AT 48" AFF

AREA TABULATION

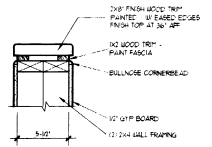
LIVING AREA	2633 S.F.
COVERED ENTRY	135 S.F.
GARAGE	741 S.F.
COVERED LANAI	182 S.F.
TOTAL	3711

INDEX OF DRAWINGS

- A-1 EXTERIOR ELEVATIONS
- A-2 FLOOR PLAN & SPECS
- A-3 REFLECTED CEILING PLAN, DETAILS
- A-4 SITE PLAN & CI SHEET
- S-1 FOUNDATION PLAN
- S-2 ROOF FRAMING PLAN
- S-3 STRUCTURAL SPECS, DETAILS
- E-1 ELECTRICAL PLAN



CERTIFICATE
 THESE PLANS ARE SEALED IN COMPLIANCE WITH SOUTHERN STANDARD BUILDING CODE, 1994 EDITION, INCLUDING SECTION 1606 FOR CONSTRUCTION IN A 150 MPH WIND ZONE AND IN COMPLIANCE WITH CAPE CORAL ORDINANCES. WINDLOAD AND EGRESS COMPLIANCE WITH 10 MPH WIND-SPEED RESISTANCE STRUCTURAL CALCULATION-GRAVITY WERE PERFORMED FOR THIS STRUCTURE.



1-RAIL CAP SCALE: 1/4" = 1'-0"

301 FLOOR PLAN - ELEVATION "C"

SCALE: 1/4" = 1'-0"

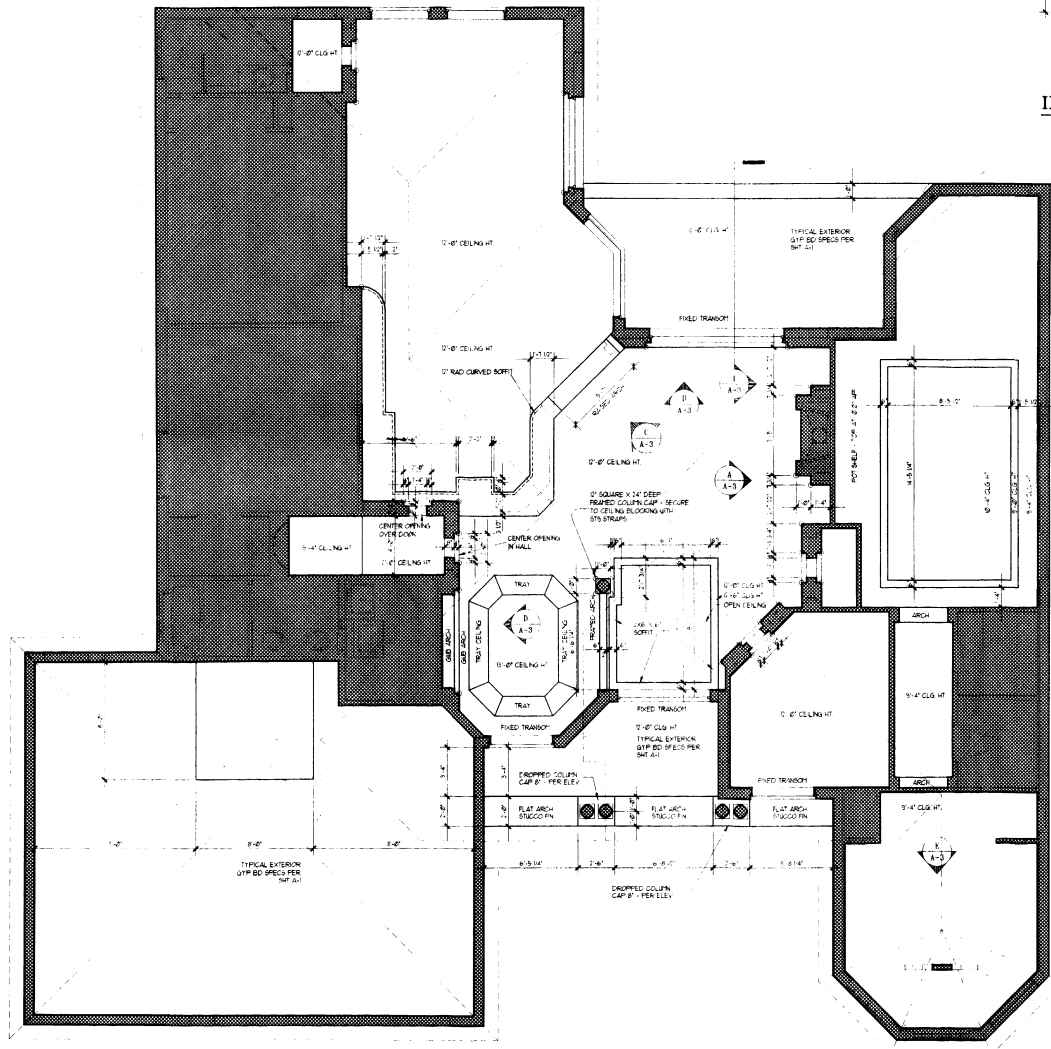
COMM: 97-102
DRAWN: T.W.H.
CHECKED:
DATE: 12/09/97
REVISIONS:
DATE BY:

ESTATE SERIES
301 - "TIARA" C-1H
 CAPE CORAL, FLORIDA
 LOT: 65 BLOCK: 6500

THOMAS W. HINKLE ARCHITECT, INC.
 10101 GULF BLDG. SUITE 100
 CAPE CORAL, FLORIDA 33914
 (941) 594-1000
 FLS ARCH 0000000

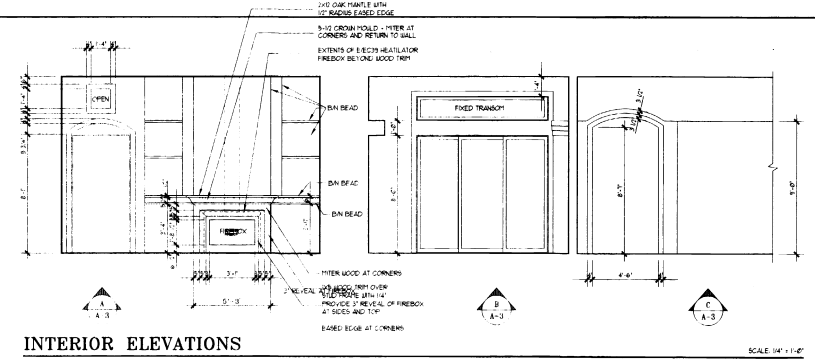
AVATAR PROPERTIES INC.
 10101 GULF BLDG. SUITE 100
 CAPE CORAL, FLORIDA 33914
 (941) 594-1000

SHEET
A-2
 C
 ERICKSON



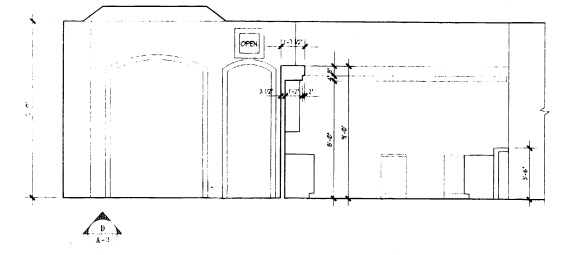
301 REFLECTED CEILING PLAN - "C"

SCALE 1/4" = 1'-0"



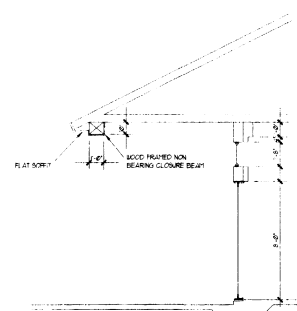
INTERIOR ELEVATIONS

SCALE 1/4" = 1'-0"



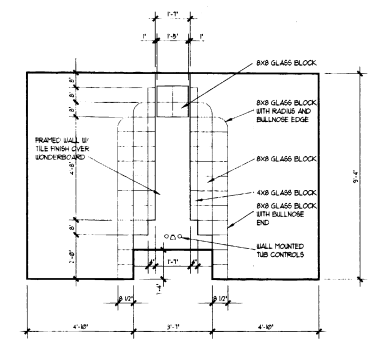
INTERIOR ELEVATIONS

SCALE 1/4" = 1'-0"



1 - SECTION

SCALE 1/4" = 1'-0"



MASTER BATH DETAIL

SCALE 3/8" = 1'-0"

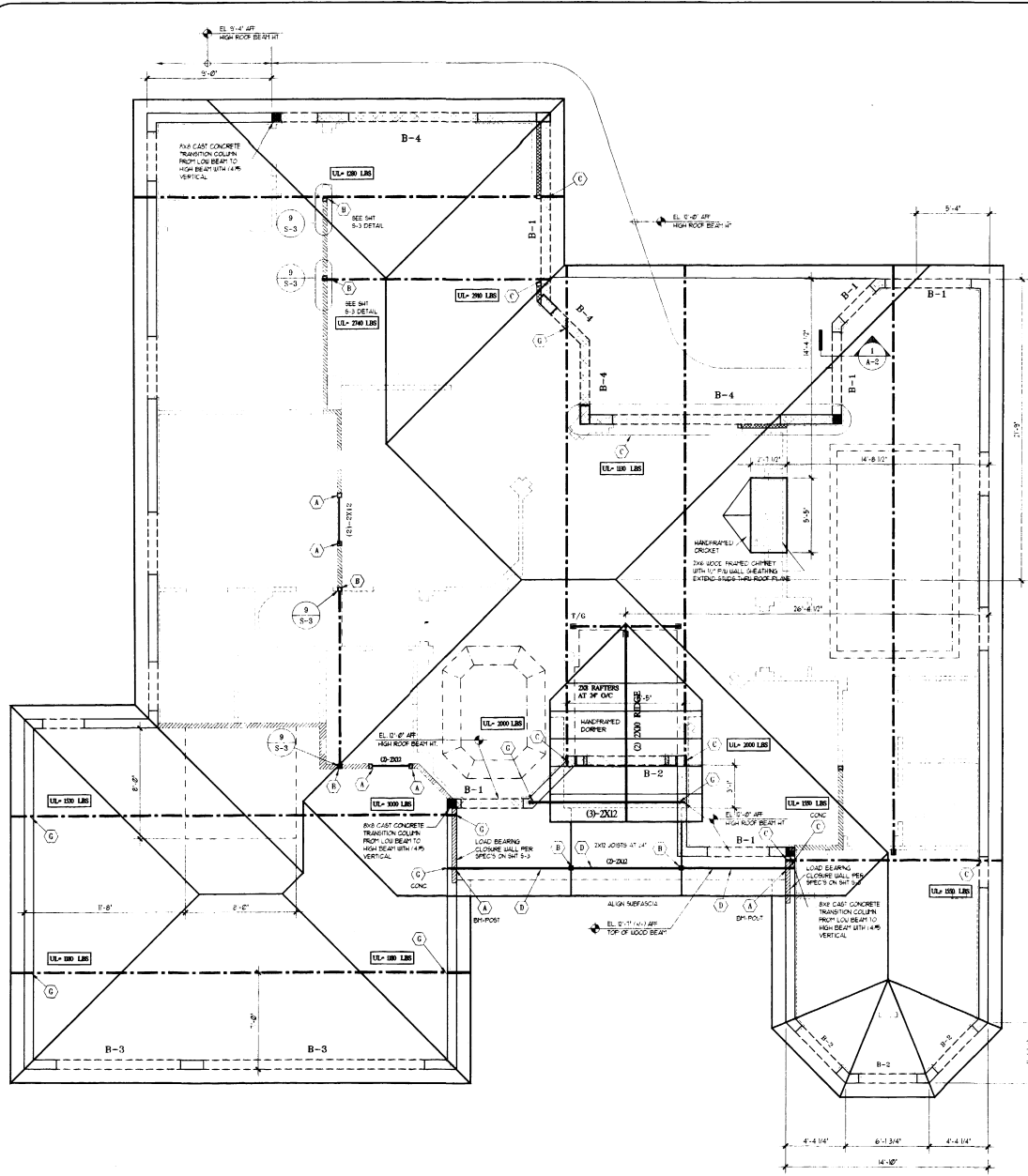
COMM: 97-102
 DRAWN: T.W.B.
 CHECKED:
 DATE: 11/06/97
 REVISIONS:
 DATE BY

ESTATE SERIES
 301 - "TIARA" C-LH
 CAFE CORRAL PLAZA
 LOT 82 BLOCK 6500

CONSULTING ARCHITECT:
 THOMAS W. HINKLE ARCHITECT, INC.
 202 S.W. 47th AVENUE
 CAPE CORRAL, FLORIDA 33904
 (407) 241-1111

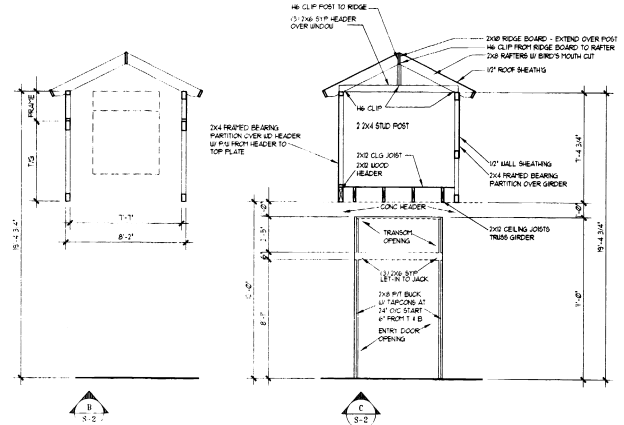
CONTRACTOR:
 AVATAR PROPERTIES INC.
 401 CAPE CORRAL PARKWAY
 CAPE CORRAL, FLORIDA 33904
 (407) 941-9400

SHEET
 A-3
 C
 BRUCKNER



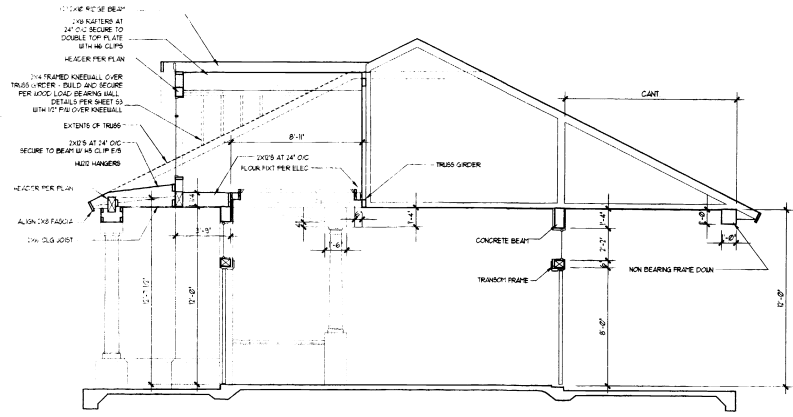
301 ROOF FRAMING PLAN - "C"

SCALE 1/4" = 1'-0"



DORMER DETAILS

SCALE 1/4" = 1'-0"



301 - SECTION - "C"

SCALE 1/4" = 1'-0"

MARK	DESCRIPTION	ALLOW	UP/LIFT
A	(1) 5/8" FROM POST TO HEADER	175	5/8"
B	(1) 5/8" FROM POST TO HEADER/TRUSS - EXTEND STUD POST TO BOTH OF TRUSS TRUSS CEL TOP PLATE IF REQUIRED	5000	
C	SPANS FROM CONCRETE TO TRUSS	400	
D	SECURE TRUSSES AND RAFTERS TO WOOD HEADER WITH NAILS	1000	
E	SPANS FROM CONCRETE TO GIRDER	505	
F	(1) 1/2" FROM POST TO GIRDER/HEADER	2000	
G	(1) 1/2" FROM CONCRETE TO POST/GIRDER AND/OR EACH SIDE OF BEAM	2300	

BEAM SCHEDULE				
BEAM MARK	BEAM SIZE	BOTTOM BARS	TOP BARS	TIES (IF TYPICAL)
B-1	8 x 18	(3) #5	(2) #5	
B-2	8 x 18	(3) #5	(2) #5	(2) #5 INTERMEDIATE
B-3	6 x 24(+/-)	(3) #5	(2) #5	(2) #5 INTERMEDIATE
B-4	8 x 18	(3) #5	(2) #5	(5) #3 AT 4" FROM CORNERS BAL AT 12"
TB	8 x 18	(2) #5	(2) #5	

F_c = 3000 PSI (CONCRETE)
F_y = 60,000 PSI (STEEL)

COMM: 97-102
DRAWN: T.W.H.
CHECKED:
DATE: 12/05/97
REVISIONS
DATE BY

ESTATE SERIES
301 - "TIARA" C-LH
CAPT. DONALD F. HINKLE
DOT. 05 BUICE 6600

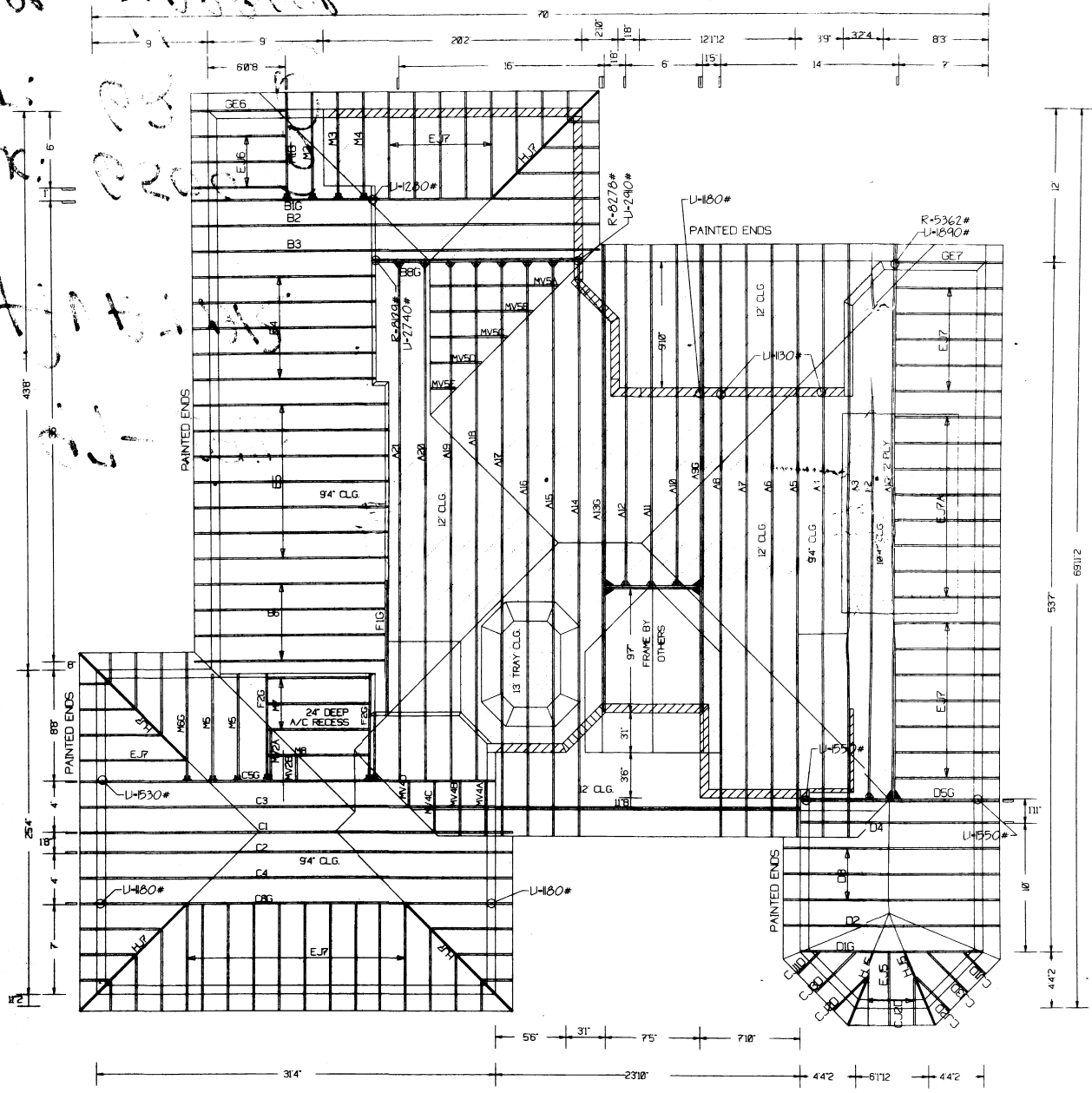
CONSULTING ARCHITECT
THOMAS W. HINKLE ARCHITECT, INC.
CAPT. DONALD F. HINKLE
CORPORATE REPRESENTATIVE

DEVELOPER
AVATAR PROPERTIES INC.
101 CAPE CORAL HWY
CAPE CORAL, FLORIDA 33914

SHEET
S-2
ERICKSON

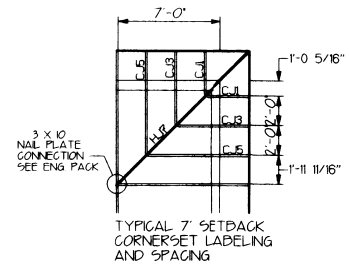
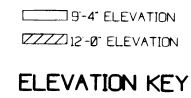
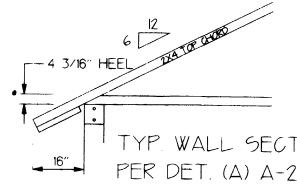
Total Truss Quantity = 168

JHB
 12/1/95
 2/15/2005
 2/20/05
 2/20/05
 2/20/05



HANGER SCHEDULE

- ▲ - HUS 26 (SIMPSON)
- ▲ - HUS 28-2 (SIMPSON)
- ▲ - 220 CLP (HUGHES)



REVISIONS

DATE	NAME	LOAD #

NOTES

- All parallel chord trusses, flat trusses and flat gables have the top chord partially painted green to be installed green side up.
- All trusses to be section HUSS unless otherwise noted.
- All trusses 24' or longer unless noted independently dimensioned. 1/2" bearing should be placed at a minimum spacing of 12" OC across the span to be supported at a minimum of 20' between each truss throughout the structure.

LOADS

TOP CHORD LL	TOP CHORD DL	BOTTOM CHORD DL	TOTAL LOAD	DURATION FACTOR	WIND SPEED	UPLIFTS BASED ON
= 20	= 20	= 10	= 50	= 1.25	= 110 MPH	= 10 PSF

CARPENTER CONTRACTORS OF AMERICA
 3900 AVENUE G, N.W.
 WINTER HAVEN, FLORIDA 33880
 (800) 959-8806

PROJECT DATA
 BUILDER: AVATAR PROPERTIES
 PROJECT: CAPE HARBOR
 MODEL: 301 - TIARA C-LH
 C.C.A. PROJ./MODEL: C62 301CZ

SCALE: 1/4"=1'-0"
 DRAWN BY: JIM
 DATE: 11-25-97
 DIR: # 23046
 SHEET # 1 OF 1

LOT: 62 BLOCK: 6500