

Charlotte Pipe Revit Families

Install .CSV files for proper functionality

Please follow all steps in the order listed. If these steps are not followed you may have errors.

Step 1

- **Close Revit.**

Step 2

Install CSVs to REVIT MEP “LookupTables” folder, see install paths below.

Lookup tables are CSV files that contain the controlling dimensions of a fitting.” LookupTables” will be hereafter referred to as “CSV files”.

- **For Local Installation (Placing files on your computer)**

Here is the typical location on systems running **Windows 7**. *Please note if you have modified the default install path then you need to verify where the folder exists. If you are not running Windows 7 please contact Autodesk for location.*

For Revit MEP 2010

C:\ProgramData\Autodesk\RME 2010\LookupTables

For Revit MEP2011

C:\ProgramData\Autodesk\RME 2011\LookupTables\Pipe

For Revit MEP2012

C:\ProgramData\Autodesk\RME 2012\Lookup Tables\Pipe

For Revit MEP2013

C:\ProgramData\Autodesk\RME 2013\Lookup Tables\Pipe

For Revit MEP2014

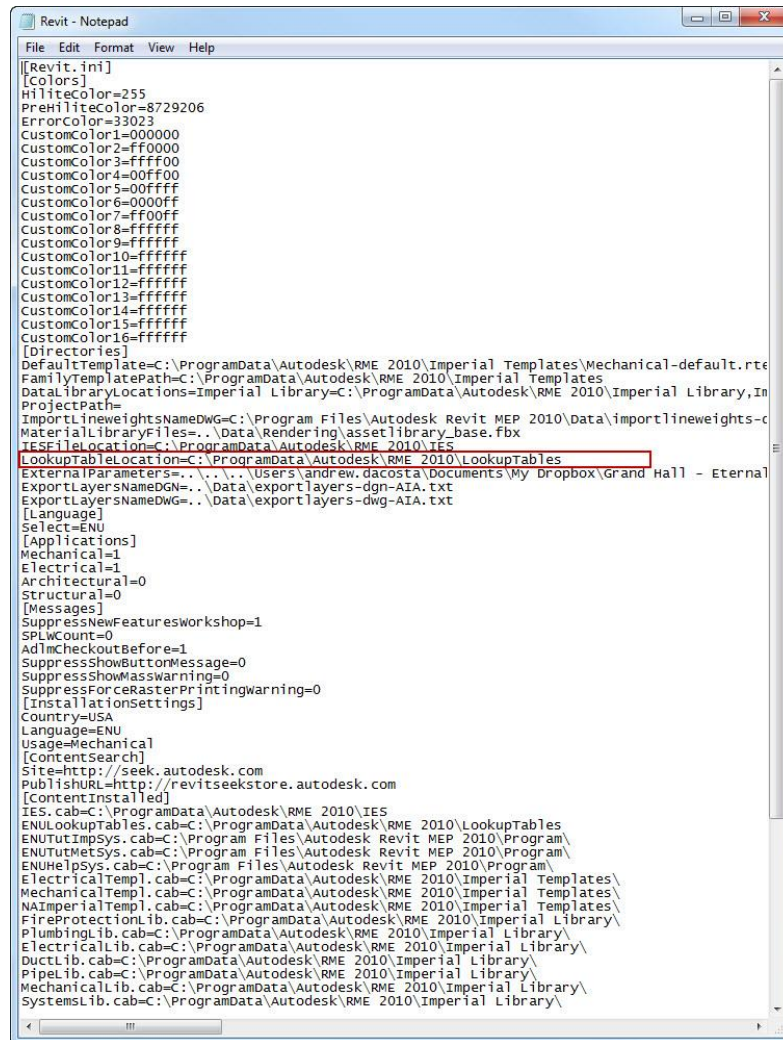
C:\ProgramData\Autodesk\RME 2014\Lookup Tables\Pipe

*****Note, for Revit Design Suite software, which has the Architectural, MEP, and Structural platforms combined into one, you simply place the .CSV files in the “RVT 201X” folder, instead of “RME 201X”.**

*****If you change any CSV file you must restart Revit for it to recognize the changes you have made for a file or if you have added any additional CSV files to the LookupTable folder.**

Charlotte Pipe Revit Families

- **For Network Installation (placing files on the network so all users can reference them)**
 - Create a network location where you want to store the files or where your company currently stores its CSV files on its network.
 - Once a network location is created each user will need to update the *Revit.ini* (which may be hidden) file located at the default location, *C:\Program Files\Autodesk Revit MEP 2010\Program*, so that Revit MEP will find the files.
 - Change the Text in the “Revit.ini “ file from
“LookupTableLocation=C:\ProgramData\Autodesk\RME 2010\LookupTables” to “
LookupTableLocation=*your new network path that you created*”



Step 3

Launch Revit. If you change any CSV file you must restart Revit for it to recognize the changes you have made for a file or if you have added any additional CSV files to the LookupTable folder.

Charlotte Pipe Revit Families

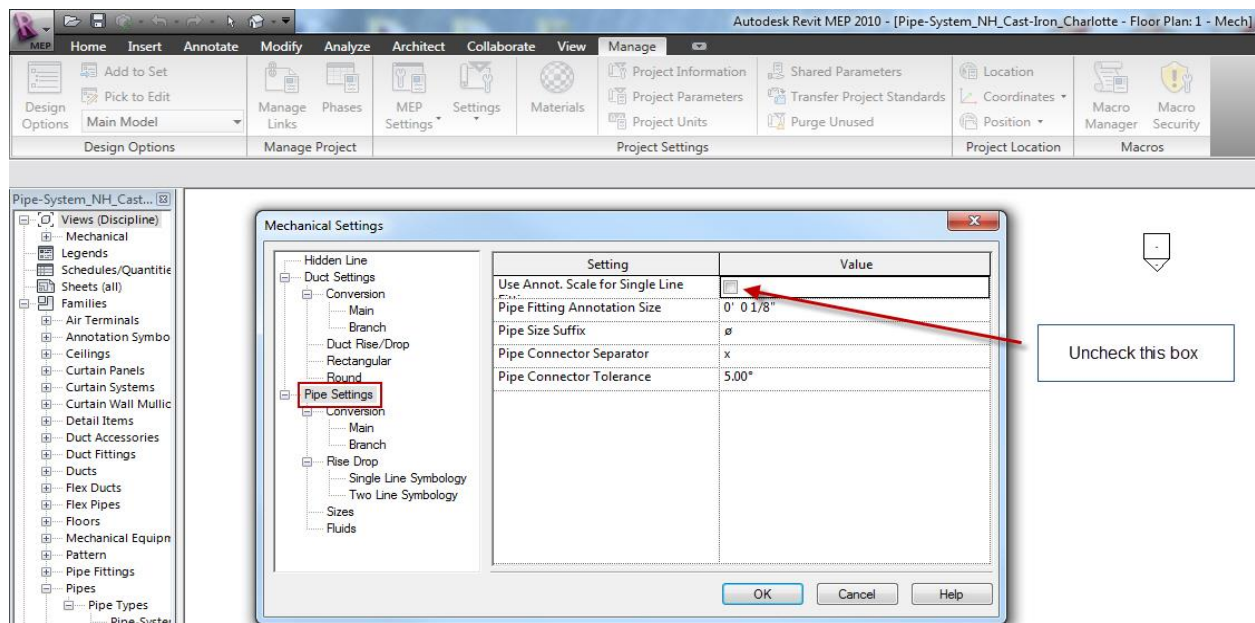
Changing sizes in Charlotte Pipe Families

- As you change sizes in the families please note that the fittings are limited to the sizes available by Charlotte Pipe. **Always verify that Charlotte Pipe and Foundry produces the pipe / fixture size you are using.** You can find the most recent catalog available online at: <http://www.charlottepipe.com/>
- If Revit does not find the combination of the sized openings of the fitting you are using, it will default to its smallest type. Please ensure that you enter both numbers for *each* diameter to get to the actual size that you are looking for. For example you may attach the fitting to an existing pipe but visually (on the fine view setting) the fitting is smaller than it should be, this has happened because you have a combination of opening sizes that are not in the CSV.
- Revit will check the numbers entered against that fitting's CSV file and if it finds that you have entered the numbers correctly it will resize the fixture instantly.

Working in Coarse or Medium View

To ensure proper visual alignment of fixtures and pipes when working in either *Coarse* or *Medium Detail Level* please follow the process below:

- On the Ribbon, please select the *Manage* tab and then click *MEP Settings*. From the resulting drop down menu select *Mechanical Settings*.
- Navigate to and then click on Pipe Settings, and uncheck the box for “*Use Annot. Scale for Single Line Fittings*”. See image below.



Charlotte Pipe Revit Families

Charlotte Pipe Fittings Available At:

[Revit Fittings on Charlotte Pipe's Website](#)

or

[Revit Fittings on Library.SmartBIM.com](#)

Comments or Concerns

You can contact SmartBIM regarding any comments or concerns regarding the pipes and pipe fittings available.

SmartBIM, LLC

E-mail: modeling@smartbim.com

Phone: 678-250-9145